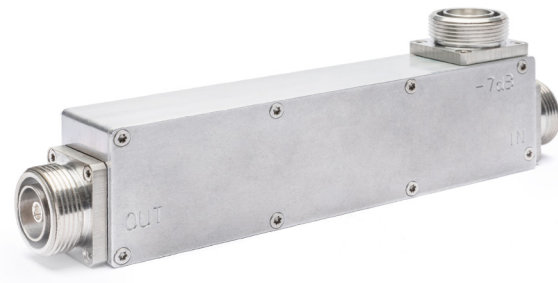


Extra Low PIM 6dB Wideband Directional Coupler, 4.3-10F



PART NUMBER	CP0-P536
PRODUCT DESCRIPTION	Extra Low PIM 6dB Wideband Directional Coupler, 4.3-10F
CONNECTOR	4.3-10 Female
COUPLING	6dB
VARIATION OF COUPLING	± 1.0 dB
INSERTION LOSS (INPUT TO OUTPUT)	≤1.3dB
DIRECTIVITY	≥20 dB
IMPEDANCE	50Ω
INTERMODULATION (IM3)	≤ -165 dBc @2 x 43dBm (600-2700MHz)
WIDEBAND	520 - 6000 MHz
INPUT VSWR	1.37:1@520-600MHz,1.22:1@600-2700MHz,1.29:1@2700-3800MHz,1.37:1@5000-6000MHz
POWER HANDLING (AT INPUT/ HIGH POWER PORT)	150W CW/Avg., 1000W Peak
TEMPERATURE RANGE	-40~ +65 °C
APPLICATION	Indoor/ Outdoor (IP66)
HUMIDITY	Relative 5-95%
DIMENSIONS (W×H×D)	180mmx 48mm x 30 mm

Contact Us

To find out more about our products and services, contact us at **1-905-554-3633** or **info@radiocomm.ca**

www.radiocomm.ca